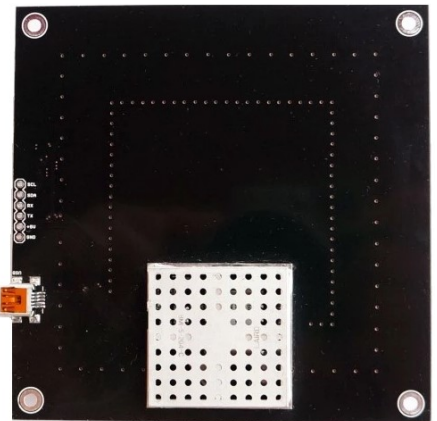
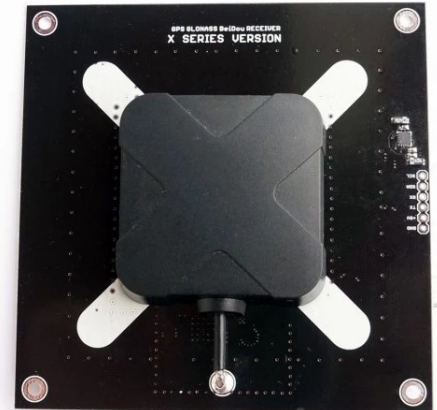




### Features:

- Centimeter accuracy for mass-market applications
- On-board low noise 3.3 V voltage regulator with noise 9 nV/ $\sqrt{\text{Hz}}$
- **USB, I2C** (SDA, SCL)(for LIS3MDL) and **UART** (Tx, Rx) interfaces
- **Mini USB** connector
- **LIS3MDL** I2C magnetometer
- **High Gain LNA** with very low noise figure
- **Double Band Pass filter** for noise rejection
- EMI and RFI protection
- u-center GPS evaluation software
- Extensive visualization and evaluation features
- Time pulse LED
- Backup supercapacitor
- Dimensions: **100x100 mm**; hole distance **90x90 mm**
- Weight: **79 gr.**

### Reference: ELT0060



### GNSS FEATURES

Receiver type	72-channel u-blox F8 engine GPS L1 C/A, GLONASS L10F, Beiidou B1I
GNSS platform	Concurrent GNSS
GNSS bands	L1C/A, L10F, B1I
Oscillators	TCXO

### PERFORMANCE

Horizontal pos. accuracy						
PVT	2.5 m CEP					
RTK	0.025 m + 1 ppm CEP					
Convergence time RTK	< 60 s					
GPS+GLO	< 60 s					
GPS+BDS	< 3.5 min					
GPS						
			Nav. update rate			
Acquisition	Cold start	Hot/Aided start	RTK	PVT	RAW	
GPS+GLO	26 s	1/2 s	5 Hz	5 Hz	10 Hz	
GPS+BDS	28 s	1/2 s	5 Hz	5 Hz	10 Hz	
GPS	29 s	1/2 s	8 Hz	10 Hz	10 Hz	
Velocity accuracy	0.05 m/s					
Dynamic heading accuracy	0.3 deg					
Sensitivity:						
Tracking and Navigation	-160 dBm					
Reacquisition	-160 dBm					
Cold start	-148 dBm					
Hot start	-157 dBm					

### OTHER FEATURES

Anti-jamming	Active CW detection and removal Extra onboard band pass filter
Memory	Flash
RAW data support	Carrier phase, code phase and pseudo-range, Doppler on all signals
Operating temperature	0 °C to +50 °C
Supply voltage	4.5 V to 5.5 V
Supply current	<55 mA