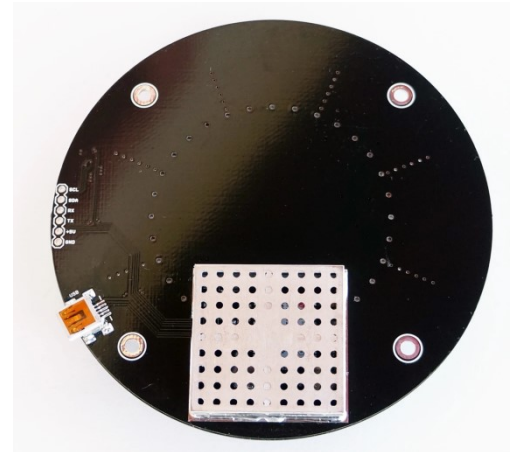


## Features:

- On-board low noise 3.3 V voltage regulator and RF filter for noise blocking
- **USB**, and **UART** (Tx, Rx) **RAW** data out available
- **Dual band** GPS, GLONASS, BeiDou antenna
- **Mini USB** connector
- **LIS3MDL** I2C magnetometer
- Time pulse LED
- u-center GPS evaluation software
- Extensive visualization and evaluation features
- EMI and RFI protection
- Backup supercapacitor
- Dimensions: Round **100 mm**; hole distance **60x60 mm**
- Weight: **113 gr.**

## Reference: ELT0055



### GNSS FEATURES

Receiver type	72-channel u-blox M8 engine GPS/QZSS L1 C/A, GLONASS L10F, Beidou B1I, Galileo E1B/C, SBAS L1 C/A: WAAS, EGNOS, MSAS, GAGAN
GNSS platform	Concurrent GNSS
GNSS bands	L1C/A, L10F, E1-B/C, B1I
Oscillators	TCXO

### PERFORMANCE

Time pulse accuracy	≤ 20 ns (clear sky) ≤ 500 ns (indoor)			
Time pulse frequency	0.25 Hz ... 10 MHz			
Horizontal position accuracy (GPS+GLONASS)	2.5 m (autonomous) 2.0 m (with SBAS)			
Acquisition	Cold start	Hot start	Aided start	Nav.update rate
GPS+GLONASS	25 s	1 s	2 s	4 Hz
GPS	29 s	1 s	2 s	10 Hz
GLONASS	30 s	1 s	2 s	10 Hz
Beidou	34 s	1 s	3 s	10 Hz
Galileo	45 s	1 s	7 s	10 Hz
Velocity accuracy	0.05 m/s			
Dynamic heading accuracy	0.3 deg			
Sensitivity (GPS+GLO):				
Tracking and Navigation	-167 dBm			
Reacquisition	-160 dBm			
Cold start	-148 dBm			
Hot start	-160 dBm			

### OTHER FEATURES

Anti-jamming	Additional SAW filter and LNA
Anti-spoofing	Spoofing detection
Memory	Flash
Operating temperature	0 °C to +50 °C
Supply voltage	4.5 V to 5.5 V
Supply current	<55 mA